



**Documentation FIS2000**  
**Base Release 2023.01**


## Table of contents

<b>TABLE OF CONTENTS</b> .....	<b>2</b>
<b>INTRODUCTION</b> .....	<b>3</b>
<b>NEW IN RELEASE 2023.01</b> .....	<b>4</b>
<b>TECHNICAL ENHANCEMENTS</b> .....	<b>5</b>
RELEASE.....	5
<b>FUNCTIONAL ENHANCEMENTS</b> .....	<b>7</b>
RELEASE.....	7
<b>CHANGES IN MENU OPTIONS</b> .....	<b>9</b>
RELEASE.....	9
<b>CONNECTING WITH OTHER APPLICATIONS</b> .....	<b>9</b>
<b>SOLVED ERROR MESSAGES</b> .....	<b>10</b>
RELEASE.....	10
<b>SUPPORT</b> .....	<b>13</b>

<https://www.pantheon-automatisering.nl/diensten/ibm-i-diensten/fis-fms/>

## Introduction


This document can be regarded as a guide for e.g. the application manager when implementing release 2023.01 of FIS2000 within the organisation.

 *With version 2023.01 of FIS2000 Pantheon also releases a 2023 version of all related software products, like e-Mapping, Fixed Assets Control (FAC), Spoolfile Manager and Billing (FAK). When you move to FIS2000 release 2023.01, you need to install the 2023 version of all software you are using - download from <https://www.pantheon-automatisering.nl/diensten/ibm-i-diensten/fis-fms/> choose 'Portaal'*

Please be aware of the following conditions and effects:

- During the installation of this release the entire FIS2000 program library (standard name: FISOBJLIB) will be cleared and replaced. Objects you may have added after a previous installation, will be lost in the process
- If your current version of FIS2000 is older than version 2016.01, you must load release 2016.01 or 2019.01 first and modify your data library (libraries). Then move to version 2023.01; if you have any questions on this procedure, please contact Pantheon support
- All payment and collection proposals, as well as draft, cheque and TAX proposals must be completed (including Pay Definitely / Definitely Collect) before installing release 2023.01
- Install the Easy@ccess Basepack (version **10.1.4**) as supplied with this release; it contains the latest additions for Pantheon software
- Always install the Easy @ccess panels provided, both the general (in '/Panels/Shared Files') as the FIS2000-specific panels (in '/Panels/FIS2000'). The online help text is loaded automatically
- Users of the Online Approval module need to install the version provided with this release, version **2023.01.00**, as well as the most recent Webviewer, available on the Portal

After installing this release, you will have to run the 'Modify file library for new Release/PTF' procedure for every FIS2000 data library on your system. During this process, the posting files will NOT be converted

 *We strongly recommend testing new software in a separate environment, especially if you use custom built software or third-party applications connected with FIS2000.*

Finally, for news and information worth knowing about FIS, please refer to:  
<https://www.pantheon-automatisering.nl/diensten/ibm-i-diensten/fis-fms/>

## New in Release 2023.01

In short, the most important features and improvements in this release. Additional information can be found in the chapter 'Functional Enhancements':

### Introduction of a general logging function

For a number of FIS menu options a general logging function was added. If modifications are made, FIS now records – in more or less detail – which user started an option, at what time this occurred.

### Payment schedule for foreign payments

The functionality for payment schedules is now also available for foreign payments.

### Generate correction transactions from the archive

When the FIS archive is used to generate new financial transactions in order to correct a previous batch, this can now be indicated directly.

### Additional invoice information in Reconciliation

When updating transactions, FIS now displays the initial amount and the actual balance of an invoice

### Include a longer creditor name in SEPA payment files

If the current 35 positions (address line 1) are insufficient, FIS now offers the possibility to include the second address line in SEPA and WRLD payment files. For WRLD-payments you can also specify a separate 'beneficiary name'

### Use individual settings for "Charge Bearer" in foreign payments (WRLD format)

As from this release FIS uses the settings for transaction costs from the creditor master data, instead of one general setting for all transactions in one payment file.

### Use alternative descriptions for posting dimensions

For each user you can now chose to use the (first part of the) long description of financial dimensions in 'Screen information postings'.

### Separate IFS location for SHA-calculations

FIS now creates and uses a separate IFS location, in order to prevent the 'current directory' of an individual user from being used.

## Technical enhancements

### Release

#### File changes in the database

In this release the following data files in the FIS2000 data library were altered:

FAGPLF	General Log file (new)
FAGLLF1-2	General Log file (new, logicals)
DCAPSB	Db/Cr domestic Bank master data
DCTS	Db/Cr foreign Bank master data
DCVPGB	Master data users

#### Transfer to a new operating system

For Release 2023.01 of FIS2000 (and all its PTF's) version **V7R4M0** of the IBM Operating system is required; it is not possible to install FIS20000 software on V6-servers. This condition is checked during the installation process.

*Note: other OS-conditions may apply for e-Products (e.g. e-Mapping, SFM and FAC) linked to FIS.*

If you have questions on this subject, please contact Pantheon Automatisering. Call +31 513 657 357, or send a mail to [support@pantheon-automatisering.nl](mailto:support@pantheon-automatisering.nl)

#### Upgrade Easy@ccess software

You need to install new system software: Basepack **10.1.4**, also known as 'Rocket Modern eXperience Desktop Client'. Please refer to the loading instructions for additional information.

Note: you also need to install the Easy@ccess panels for this release; panel sets always contain all panels. Remember that panels are distributed in two files: general panels (in '/Panels/Shared Files') and FIS2000 panels (in '/Panels/FIS2000').

Also check the version of the Seagull License Manager (LMS) – you will find all details in the loading instructions. If an update is required, the software can be downloaded from the customer portal. <https://www.pantheon-automatisering.nl/diensten/ibm-i-diensten/fis-fms/> select 'Portaal'

### Select your browser for the HTML Help texts

In FIS2000 function key <F1> triggers the Help function which displays help text in a browser.

Not all browsers present the help text correctly. If you encounter problems, you can solve this problem by using an alternative browser for FIS help text. Refer to your settings in the **defaults.ini** file (standard settings) or **custom.ini** file (your own settings) to indicate your browser of choice using the **BrowserHelp** keyword in the section [HELP]

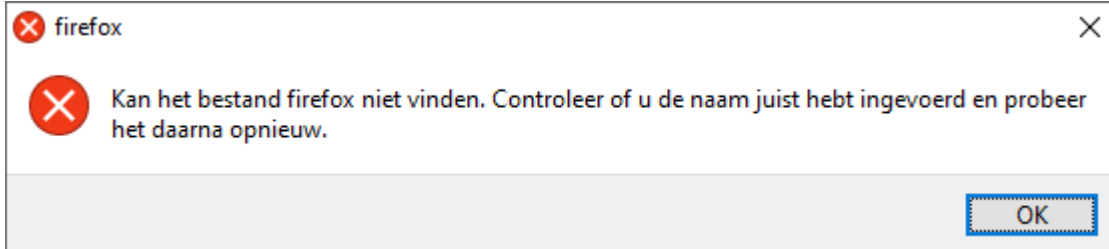
The options are:

BrowserHelp="1" (Chrome)  
BrowserHelp="2" (Internet Explorer)  
BrowserHelp="3" (Edge)  
BrowserHelp="4" (FireFox)

Example:

```
[HELP]
HelpSystem="HTML"
HelpFolderWindows="C:\Easy @ccess\app\"
HelpFolderJava="<webserverpad>/"
BrowserHelp="4"
```

If the selected browser is not installed on your pc/laptop, the following message is displayed:



## Functional enhancements

### Release

#### Introduction of an general logging function

In a number of FIS functions export to a general logging file has been added. FIS records user and timestamp when specific processes are started or in case modifications were made to master data. Depending on the specific function, details of the modification are logged as well.

At this moment, logging is present in:

- Zero invoices to history
- Reorganise History
- Maintenance locations
- Maintenance reconciliation data per bank
- Maintenance reconciliation data per company
- Maintenance Transaction Descriptions (DCR)
- Maintenance Transaction Codes (DCR)
- Maintenance Fixed Postings Data (DCR)
  
- List users
- Maintain authorisation groups
- Maintain default authorisations
- Maintain authorisations fields
- Maintain association authorisations fields
- Maintain function authorisation
- Maintain association checks
  
- Close period day book
- Maintenance rate trend
- Block periods chart
- Maintain chart data
  
- Change last invoice number and item number
- Maintenance period table (reconciliation & financial)
- Transfer external financial transactions

The available log data can be viewed through a new menu option: "Consult general log data".

#### Payment schedule in foreign payments

Up to this release, the functionality of payment schedules was available only for domestic payments. Payment schedules can now be used for foreign payments as well.

#### Generate correction postings from the archive

In many cases the archive for financial transactions is used to generate new transactions in order to correct a previous batch. FIS now offers the 'create corrections' option, which means that new financial transactions are created, in which all amount elements are reversed.

If you use this option, the new user identification will contain transactions that are completely opposite to the original.

### More invoice information in Reconciliation

The screen “Change Reconciliation - Change Transaction” now contains additional information on the invoice(s) involved: invoice amount and invoice balance.

### Longer beneficiary name available for SEPA- and WRLD payments

In case the current 35 characters (address line 1) are insufficient, FIS now offers the possibility to combine address line 1 and 2 of the creditor and use this as description of the beneficiary.

For domestic payments, FIS uses the ‘Account holder name’ in first instance. If this field is not used, address line 1 is used. As from this release you can use a new selection in the bank master data, indicating that the creditors address line 1 and 2 should be combined for SEPA payment files.

For foreign payments (“non-SEPA”) the same options are available. In the bank master data you can specify the ‘beneficiary name’ for bank transactions. If left blank, FIS uses address line 1 as standard, but you can also indicate that a combination of the creditors address line 1 and 2 should be used.

**Note:** address line 1 and 2 are combined to a string of 70 characters. Spaces at the end of line 1, or at the beginning of line 2 will be included in the combined beneficiary name!

### More flexibility for the “ChrgBr” element in WRLD payment files

Up to this release only one setting could be used for the element ‘Charge bearer’ in a non-SEPA payment file. This setting would apply to all payments in your payment file. As from this release, FIS uses the setting specified in the bank account master data of each individual creditor.

### Alternate descriptions for the financial dimensions in screen information postings

For each financial dimensions (Accounts, Cost centers etc.) a standard description of 20 characters is available. The master data also provide an extended description of 40 characters, mainly used for reports and export. A number of FIS clients however, use the application in a multi-country environment and use the extended description for a description in a second language.

FIS now supports this approach with the setting “use alternate descriptions” in the user master data. Once selected, FIS displays the alternate description in ‘Screen information postings’. Also, the search windows on financial master data now allow a search by alternate (extended) description.

**Note:** the screen lay-outs have not been altered; from the available 40 characters, only 20 can be displayed.



## Separate IFS directory for SHA calculations

When a SHA-calculation is selected in the bank master data settings, FIS would use the 'current directory' of the user. For some FIS users this was not the optimal approach. Also, work file 'tbvsha\_x' was not removed after a SHA-calculation.

As communication with banks is more and more automated, some procedures in FIS have been altered. FIS now creates a temporary directory during "Pay definitely" (`/home/fis_TEMP/jobnumber`), saves work files there and also uses this location to perform SHA-calculations. Immediately after these job steps, files and directories are removed.

## Changes in menu options

### Release

#### FISLOG Logging

- Consult general log data New

## Connecting with other applications

All changes described so far, may affect connections with other applications on your PowerSystem. All existing interfaces are supported; in most cases new fields have been added at the end of parameter strings.

Additional information and more technical details are available in the handbook Interfaces in the Online Help text.



- FIS2000 release 2023.01 can also be connected to other Pantheon applications. Together with FIS2000 a 2023.01 release for all FIS related applications has become available. If you upgrade one of these applications to the 2023.01 level, you need to install the 2023.01 release of all other products as well.

If you have any questions regarding connections with FIS2000, please contact Pantheon Automatisering. For up-to-date information; go to:

<https://www.pantheon-automatisering.nl/diensten/ibm-i-diensten/fis-fms/>

## Solved error messages

In the list below, you can find all messages that have been solved for the corresponding release. The support-ID or internal R&D number is assigned to each of these messages.

### Release

Menu option	Number	Description
General	FIS202301	General task for FIS Release 2023.01
Function authorizations	ACC207	Availability of the action 'Approve' can now managed through Function Authorizations
Interfaces	ALP85	Error-handling of bank sequence number for foreign banks improved
Link with e-Transaction	BRC113	Import program FCS221 could provide a large number of dump in case of errors in the upload
e-Mapping	EPR130	New mapping definition for exchange rates
Reconciliation	FIS30	When retrieving the period number from the period table, the financial year is also selected
Reminders / Account overviews	FIS57	Handling of initial texts and closing lines was checked
Logging	FIS67	Introduction of a general logging function
Automatic pay – Foreign	FIS70	Introduction of payment schedule
Interfaces	FIS81	Interfaces to add individual screen checks on Pay and Collect definitely
Archive financials transactions	FIS82	New option to create 'reverse transactions' in order to correct an earlier batch
Screen information postings	FIS83	Improved internal handling of the authorization settings
Control report financial transactions	FIS84	Manual transactions on the account number for Rate differences are no longer allowed
General	FIS89	Remove references to UNIT4
Reconciliation	FIS90	Display additional invoice information on the update screen
Autom. Transfer Small Amounts and Zero Balances	FIS91	Defaults from the day book master data were not included completely

---

<b>Menu option</b>	<b>Number</b>	<b>Description</b>
Logging	FIS93	Log records could contain an invalid date
Automatic pay (domestic & Foreign)	FIS94	New possibility to combine address line 1 and 2 in SEPA/WRLD payment files
Automatic pay (Foreign)	FIS95	File element 'Charge Bearer' is now retrieved from the creditor bank master data
Pay definitely (Foreign)	FIS96	A default value can be stored for "Servicelevel"
Screen information postings & search functions	FIS97	User settings provide the option the use alternative descriptions, meaning: the first 20 characters of the long descriptions of master data
Relation checks (interactive)	FIS98	Relations check are extended to a check on contra account, specified in the day book line
Automatic pay	FIS99	New separate IFS directory for SHA calculations
Payments to output medium	FIS100	The warning in case the option was used more than once, did not always work correctly
Db/Cr search	FIS103	Improved handling of special characters, like an apostrophe
Automatic payments EDI / REMADV	FIS104	Additional checks in payment process in case EDI-output (REMADV) is used
Automatic pay (Foreign)	FIS105	Introduction of 'beneficiary name' in the Cr-master data for foreign banks
Db/Cr search	FIS109	In specific search actions the Db/Cr number was not displayed completely
e-Mapping	FIS110	e-Mapping is now able to remove a User identification in case of error during upload
Remove Db/Cr master data	FIS111	Additional checks were introduced to prevent removal of Db/Cr master data where active bank accounts are still in place
Search Db/Cr	FIS112	The master data for foreign bank accounts is now included in the general search
Automatic pay / REMADV	FIS113	The creation of a REMADV file could run into error in case of special characters, like apostrophes

---

<b>Menu option</b>	<b>Number</b>	<b>Description</b>
Screen information Db/Cr	FIS114	Authorization of the screen buttons was not handled correctly under specific circumstances
FEC Export	FIS119	Introduction of FEC Audit file for France
Automatic pay (foreign)	FIS120	The standard sequence by mandate status (FRST, RCUR) can now be bypassed
Screen information Db/Cr	FIS121	In case the Db/Cr master data are set to 'inactive', this status is shown on this screen
Interfaces	FIS123	Interfaces DCA440xx were not always started in combination with 'Verified maintenance'
Interfaces	FIS125	In Work file FAMW180, "system item numbers" were not filled in case journaling ('Restart possibility') was not activated
Audit files	HIL39	Additional modifications on SAF-T Audit files for Norway
Reconciliation	HIL40	When a CAM.T file containing multiple batches was imported, the correct bank name was not always shown
Record payments	HIL41	The editing of foreign currency was not always correct

## Support

- In order to guarantee the continuity of your applications, Pantheon Automatisering offers various types of support. What to do if you want to use these services?
- For a problem involving Pantheon standard applications, please contact the Support Desk by mail: [support@pantheon-automatisering.nl](mailto:support@pantheon-automatisering.nl). A concise problem description is sufficient for the Service Desk to tackle the problem (within opening hours).
- For support during the installation and/or implementation of Pantheon applications you need to make a reservation; please contact us 14 days in advance.  
This type of support can be given at any time (during/after business hours), on location or by phone. For these services fixed tariffs apply.

You can reach Pantheon by phone: **+31 513 657 357**

You can also use this number, should you require additional information on other types of support, such as training and advice.